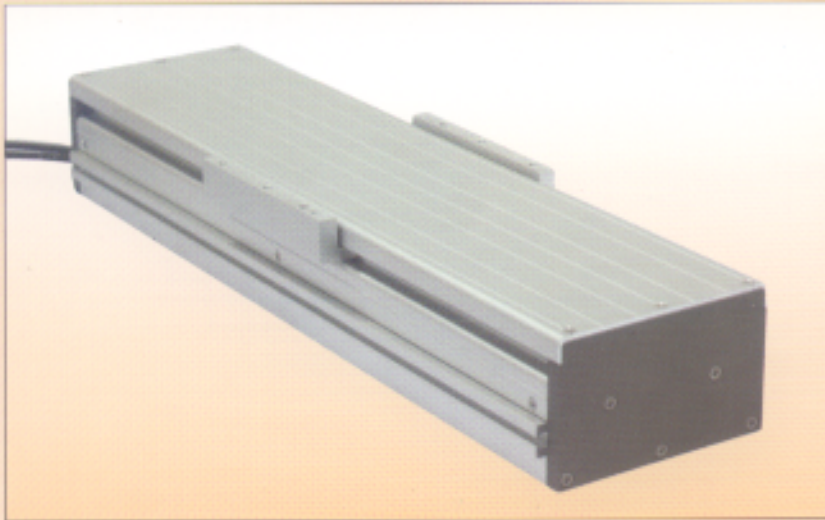


LMS20-LC Linear Motor Module

Low Cost Version



Features

- Direct Drive Design
- High Speed
- Concealed Cable Chain Concept
- High Strength Aluminium Profile
- Resolution of 25 μ m, 10 μ m
- Zero Backlash
- Least Maintenance Required

Technical Specification

Three basic models are available covering different load, speed and travel requirements.

Descriptions		Unit	LMS20-LC-C2	LMS20-LC-C3	LMS20-LC-C4
Continuous Force ¹		N	31	46.5	62
Peak Force		N	106.7	160	213.4
Maximum Velocity		m/s	5	5	5
Maximum Acceleration		m/s ²	100	100	100
Moving Carriage Weight		kg	0.96	1.12	1.27
Total Module Length (mm)	Base Weight ² (Kg)		Standard Stroke (Travel ³) (mm)		
288	3.7		120	90	60
408	5.2		240	210	180
528	6.8		360	330	300
648	8.3		480	450	420
768	9.8		600	570	540
888	11.3		720	690	660
1008	12.8		840	810	780
1128	14.3		960	930	900

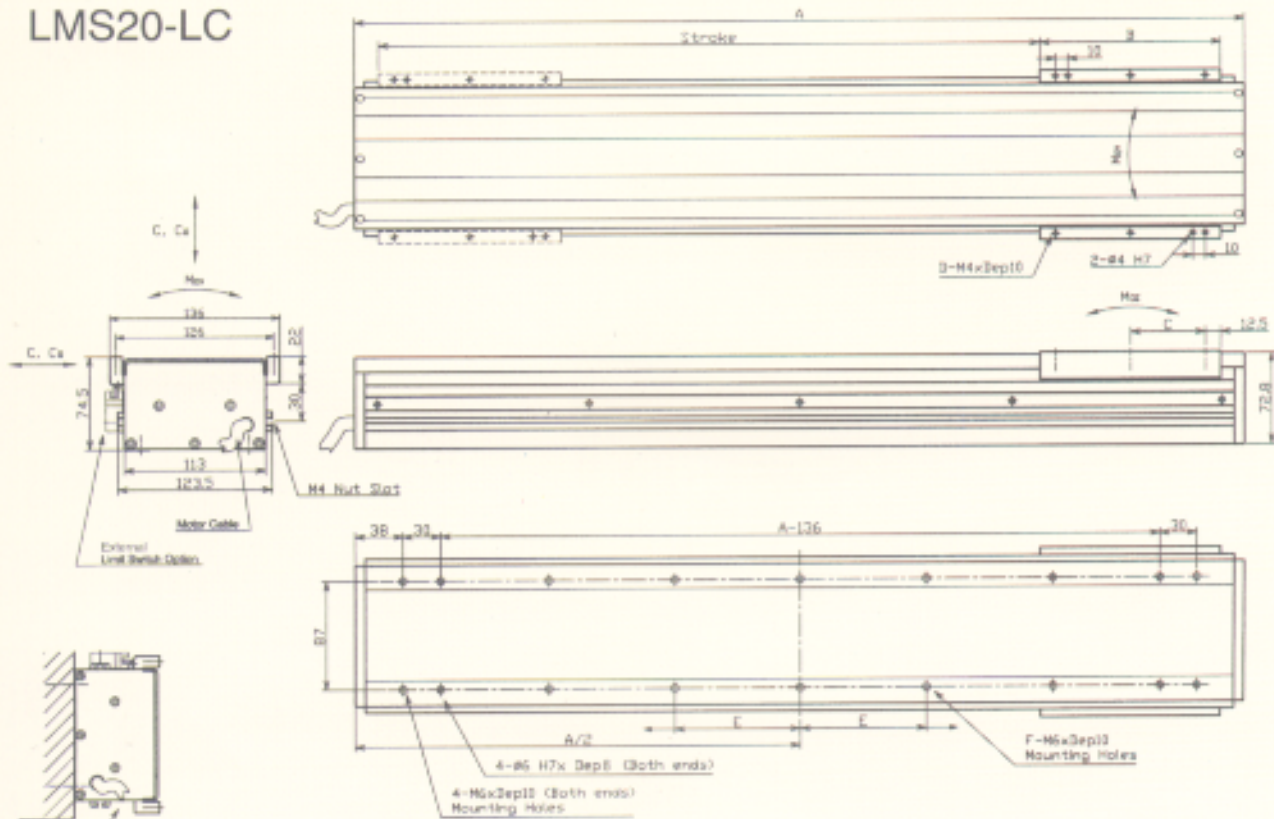
¹ Please request for free motor selection software

² Total module weight = base weight + moving carriage weight

³ Custom lengths are available, please consult factory

Dimensions

LMS20-LC



For vertical mounting, make sure the motor cable output is at the bottom.

	Moving Plate Dimensions		
	LMS20-LC-C2	LMS20-LC-C3	LMS20-LC-C4
B	115	145	175
C	2x45	2x90	3x50
D	6	6	8

Mounting Holes Dimensions			
A	E	F	Total no. of holes
288	0x100	2	5
408	2x100	6	10
528	2x100	6	10
648	4x100	10	14
768	6x100	14	18
888	6x100	14	18
1008	8x100	18	22
1128	8x100	18	22

	Bearing Load & Moment Ratings			
	LMS20-LC-C2	LMS20-LC-C3	LMS20-LC-C4	
Dynamic Load C	KN	9.8	14.4	14.4
Static Load Co	KN	16.6	29	29
Static Moment Max	Nm	172	300	300
Static Moment Maxy	Nm	70	200	200
Static Moment Maxz	Nm	70	200	200



Part Numbering System

LMS20 - LC - C2 - LXXXX - 0.1

Coil Size
C2
C3
C4

Module Length
L288
L408
L528
L648
L768
L888
L1008
L1128

Encoder Resolution
10 - 10µm
25 - 25µm

Contact us for customised specifications.